

WORKING TOGETHER
POWERING **GROWTH**

FORTIS INC.

INVESTOR PRESENTATION
October 2019

FORTIS INC. **FORWARD LOOKING INFORMATION**

Fortis includes forward-looking information in this presentation within the meaning of applicable Canadian securities laws and forward-looking statements within the meaning of the Private Securities Litigation Reform Act of 1995 (collectively referred to as "forward-looking information"). Forward-looking information included herein reflects expectations of Fortis management regarding future growth, results of operations, performance and business prospects and opportunities. Wherever possible, words such as anticipates, believes, budgets, could, estimates, expects, forecasts, intends, may, might, plans, projects, schedule, should, target, will, would and the negative of these terms and other similar terminology or expressions have been used to identify the forward-looking information, which includes, without limitation: targeted average annual dividend growth through 2024; TEP resource transition timelines and renewable energy targets; forecast capital investments and expected funding sources for 2019 and the five-year period from 2020 through 2024; forecast rate base through 2024; the expected timing and outcome of regulatory decisions; expected improvements in credit metrics; the nature, timing, benefits and costs of certain capital projects including, without limitation, the Wataynikaneyap Transmission Power Project, ITC Multi-Value Regional Transmission Projects and 34.5 to 69 kV Transmission Conversion Project, UNS Southline Transmission Project and Oso Grande Wind Project, FortisBC Lower Intermediate Pressure System Upgrade, Eagle Mountain Woodfibre Gas Line Project, Transmission Integrity Management Capabilities Project, Inland Gas Upgrades Project and Tilbury 1B and opportunities beyond the base capital plan.

Forward-looking information involves significant risks, uncertainties and assumptions. Certain material factors or assumptions have been applied in drawing the conclusions contained in the forward-looking information. These factors or assumptions are subject to inherent risks and uncertainties surrounding future expectations generally, including those identified from time to time in the forward-looking information. Such risk factors or assumptions include, but are not limited to: reasonable regulatory decisions by utility regulators and the expectation of regulatory stability; the implementation of the Corporation's five-year capital expenditure plan; no material capital project and financing cost overruns related to any of the Corporation's capital projects; sufficient human resources to deliver service and execute the capital expenditure plan; the realization of additional opportunities; the impact of fluctuations in foreign exchange; and the Board exercising its discretion to declare dividends, taking into account the business performance and financial condition of the Corporation. Fortis cautions readers that a number of factors could cause actual results, performance or achievements to differ materially from the results discussed or implied in the forward-looking information. These factors should be considered carefully and undue reliance should not be placed on the forward-looking information. For additional information with respect to certain of these risks or factors, reference should be made to the continuous disclosure materials filed from time to time by the Corporation with Canadian securities regulatory authorities and the Securities and Exchange Commission. All forward-looking information herein is given as of the date of this presentation. Fortis disclaims any intention or obligation to update or revise any forward-looking information, whether as a result of new information, future events or otherwise.

This presentation includes historical non-US GAAP measures of adjusted earnings, adjusted earnings per common share, dividend payout ratio, CFO/Debt and holdco debt/total debt. These measures do not have a standardized meaning prescribed by US GAAP and may not be comparable with similar measures of other entities. They are presented because management and external stakeholders use them in evaluating the Corporation's financial performance and prospects. The most directly comparable US GAAP measures are reconciled in the appendix of this presentation.

Unless otherwise specified, all financial information is in Canadian dollars and rate base refers to mid-year rate base.





6%

Average Annual Dividend
Growth Target through 2024

STRATEGY

Leverage the operating model,
footprint of our businesses,
operating expertise, reputation
and financial strength to execute
on growth opportunities



Focused on
Growth

AREAS OF FOCUS:

Capital
Investment Plan

Customer &
Regulatory
Relationships

Sustainability &
Delivery of
Cleaner Energy

System Resiliency,
Innovation &
Cybersecurity

Energy
Infrastructure,
LNG Expansion &
Energy Storage

Investment Grade
Credit Ratings

A Geographically Diverse Energy Delivery Business

-  Regulated Electric
-  Regulated Gas
-  FERC-Regulated Electric Transmission
-  Long-Term Contracted Hydro Generation
-  Natural Gas Storage Facility



10

OPERATIONS

Canada, U.S. & Caribbean

3.3M

CUSTOMERS

2.0M Electric & 1.3M Gas

~99%

REGULATED
UTILITY ASSETS

~93%

TRANSMISSION &
DISTRIBUTION

\$28B

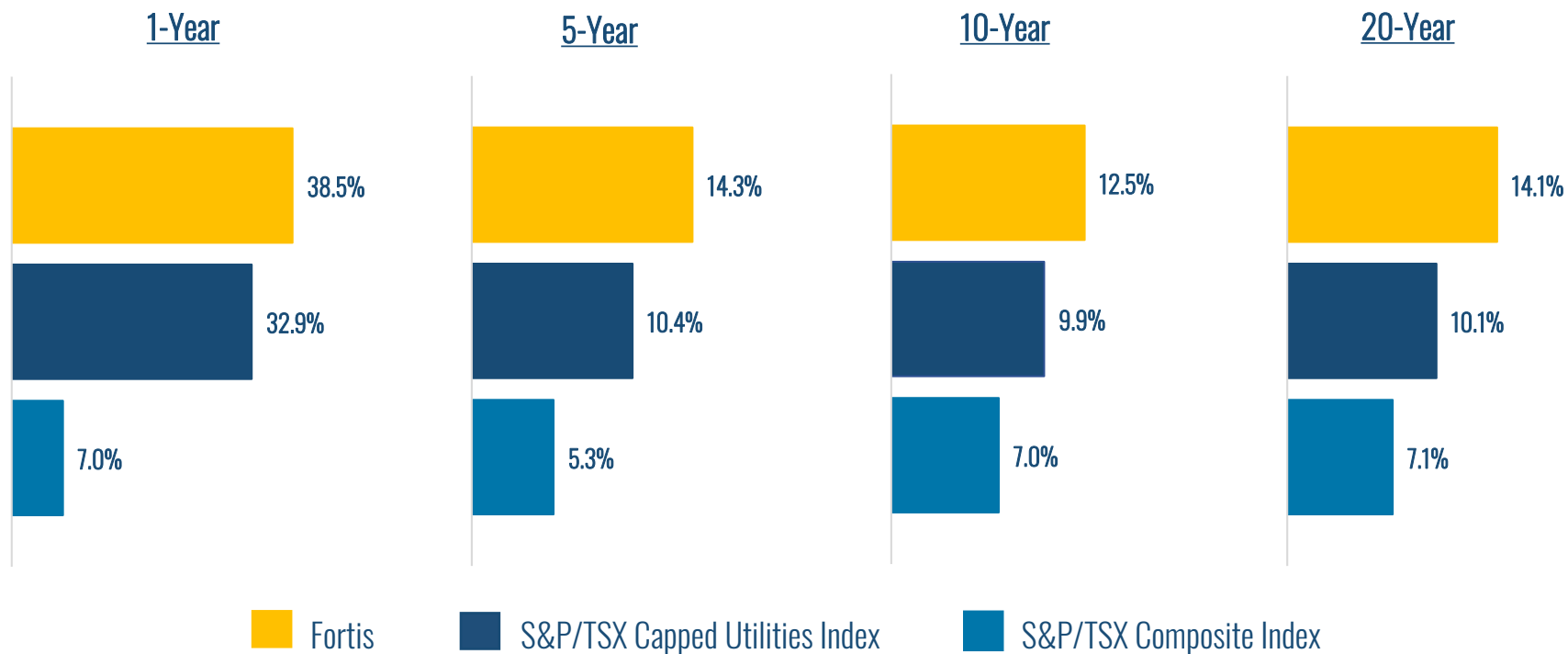
2019F RATE BASE

~66%

EARNINGS
FROM THE U.S.

Note: All information as at June 30, 2019

SUPERIOR AVERAGE ANNUALIZED TOTAL SHAREHOLDER RETURNS



Note: As at September 30, 2019

FORTIS INC. **SUSTAINABILITY:**
PRIMARILY AN ENERGY DELIVERY BUSINESS



93%

of our assets relate to electricity poles, wires and natural gas lines that enable a cleaner energy future

FORTIS INC. **SUSTAINABILITY:**
IT'S HOW WE DO EVERYTHING



**Ranked Top Decile on
Governance Matters⁽¹⁾**

Women represent

- 60% of Head Office
- 42% of Board
- 1/3 of Executive team



**Focused on Delivering
Cleaner Energy**

- FortisBC GHG emission goal set to reduce customer's energy use by 30% by 2030
- TEP will reach 28% renewable power by 2021



**Named a 2019
Best 50 Corporate Citizen
by Corporate Knights**



**Outperformed Industry
Averages in
Safety and Reliability
Measures**

(1) Ranked 7 out of 237 S&P/TSX Composite companies in the 2018 Globe and Mail Board Games. The Globe and Mail ranks Canadian corporate boards based on the quality of its governance practices in four broad subcategories: board composition, shareholding and compensation, shareholder rights and disclosure.

FORTIS INC. PATH TO CLEANER ENERGY

Generation Shifting from Fossil
Fuel to Solar and Wind Projects

Capital Investment in a
Green and Resilient Grid

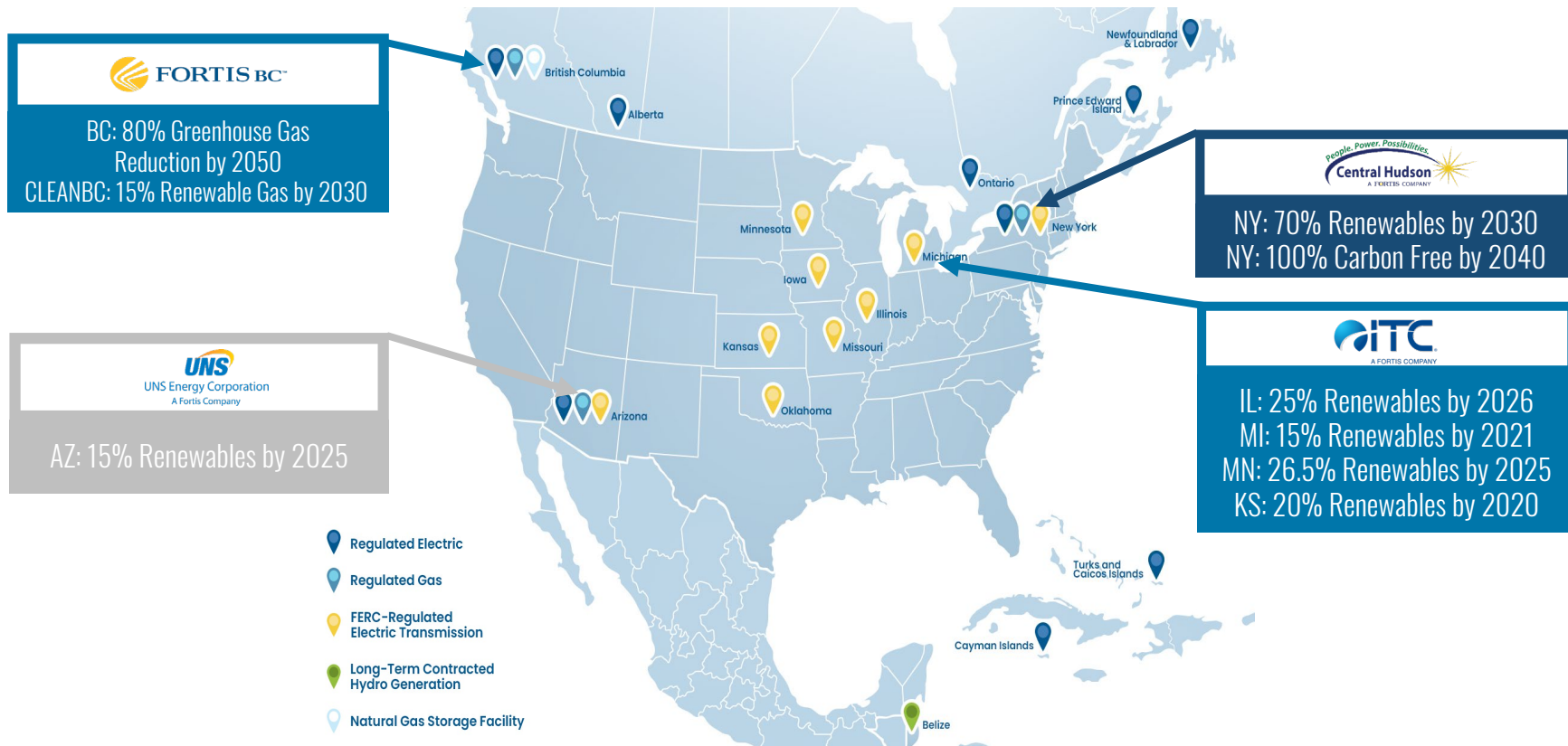
Electric Vehicle Penetration

Renewable Gas at
FortisBC

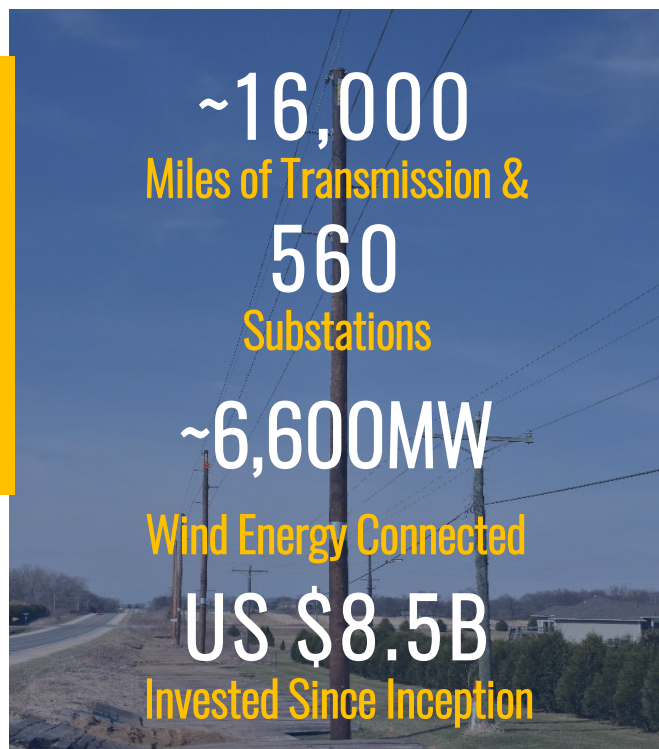
Energy Efficiency

**CLEANER
ENERGY**

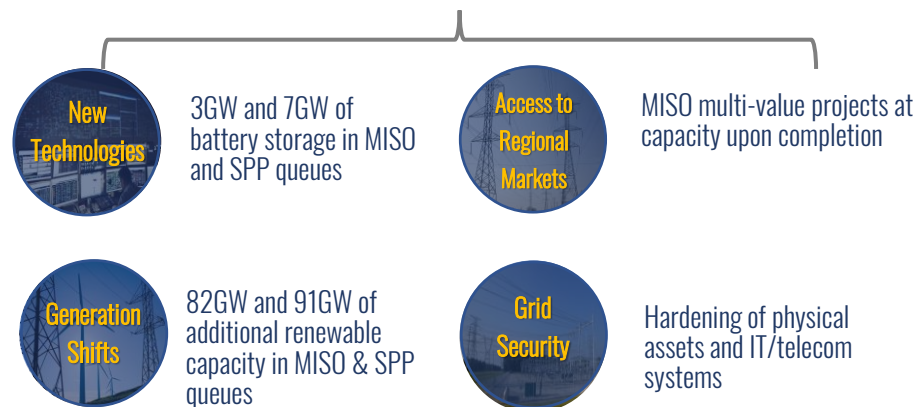
PATH TO CLEANER ENERGY: PROVINCIAL AND STATE GOALS



PATH TO CLEANER ENERGY: ITC BUILDING THE GRID OF THE FUTURE

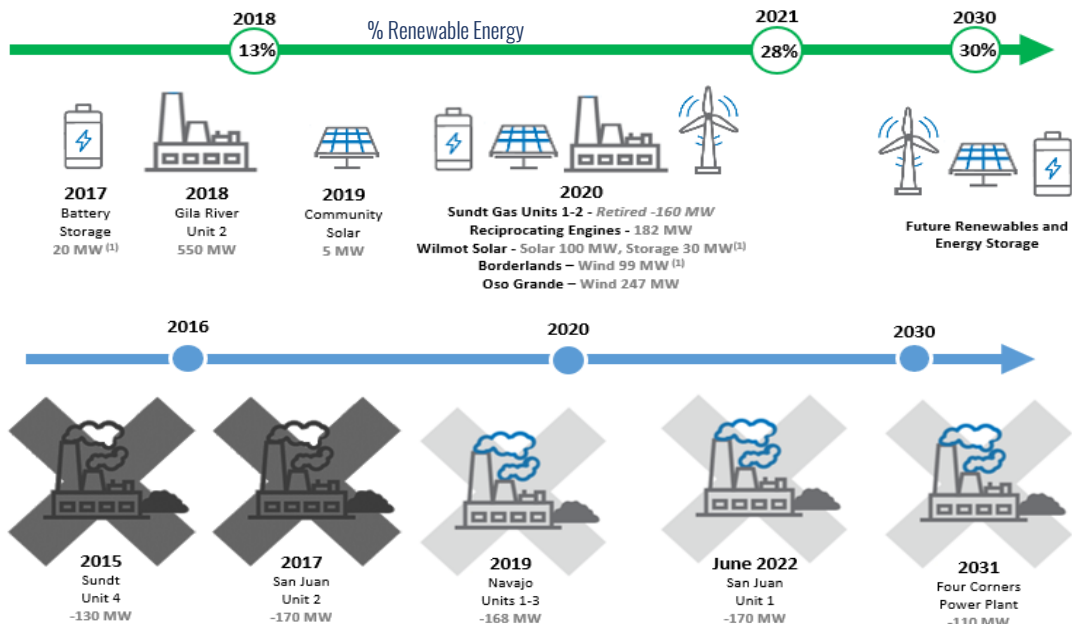


OPPORTUNITIES BEYOND THE PLAN

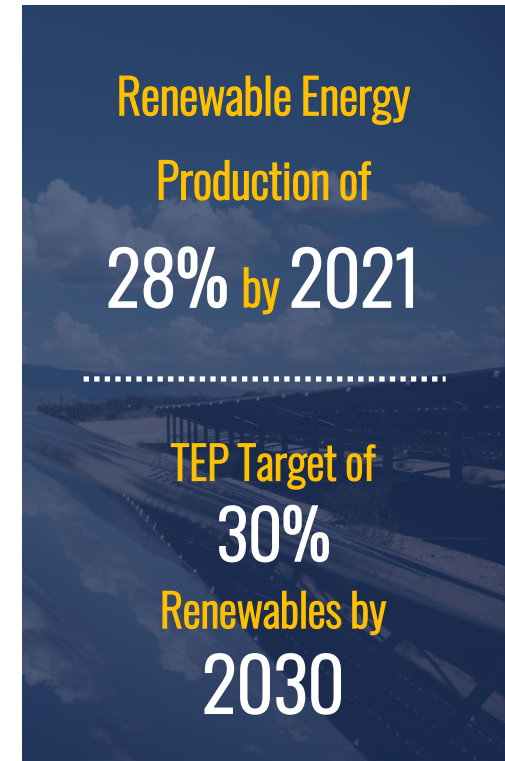


PATH TO CLEANER ENERGY: ARIZONA FOCUSED ON RENEWABLES

TEP's RESOURCE TRANSITION

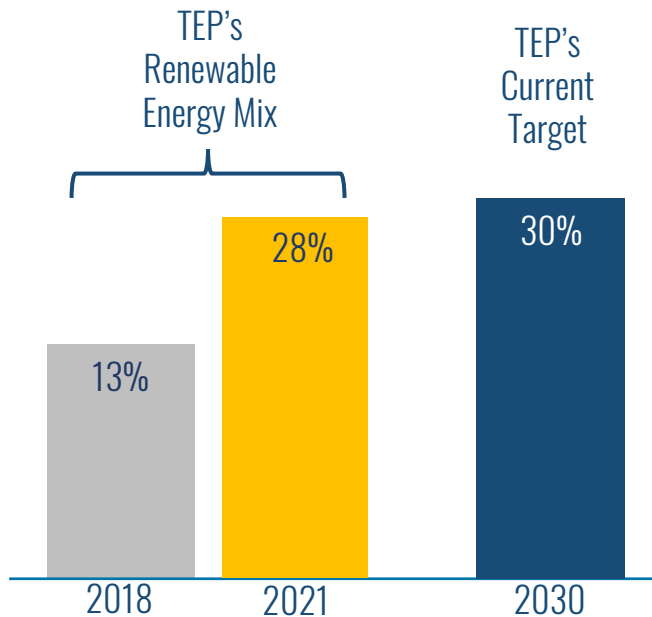


(1) Projects developed through purchase power agreements



PATH TO CLEANER ENERGY:

TEP COLLABORATING WITH LOCAL UNIVERSITY TO CREATE NEW GOALS



Developing New Carbon
Emission Goals With
University of Arizona's
Institute of the Environment

FORTIS INC. **PATH TO CLEANER ENERGY:**
LEADING INNOVATION AT FORTISBC

Renewable Gas



Natural Gas for Road and Marine Transportation



Electric Vehicles




Energy Conservation & Efficiency Incentive Program



OUR NEW FIVE-YEAR PLAN



\$18.3B
**CAPITAL
PLAN**

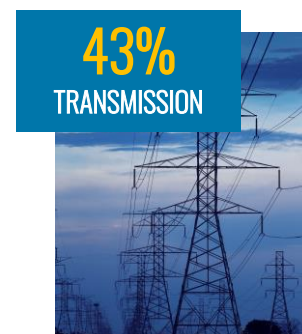
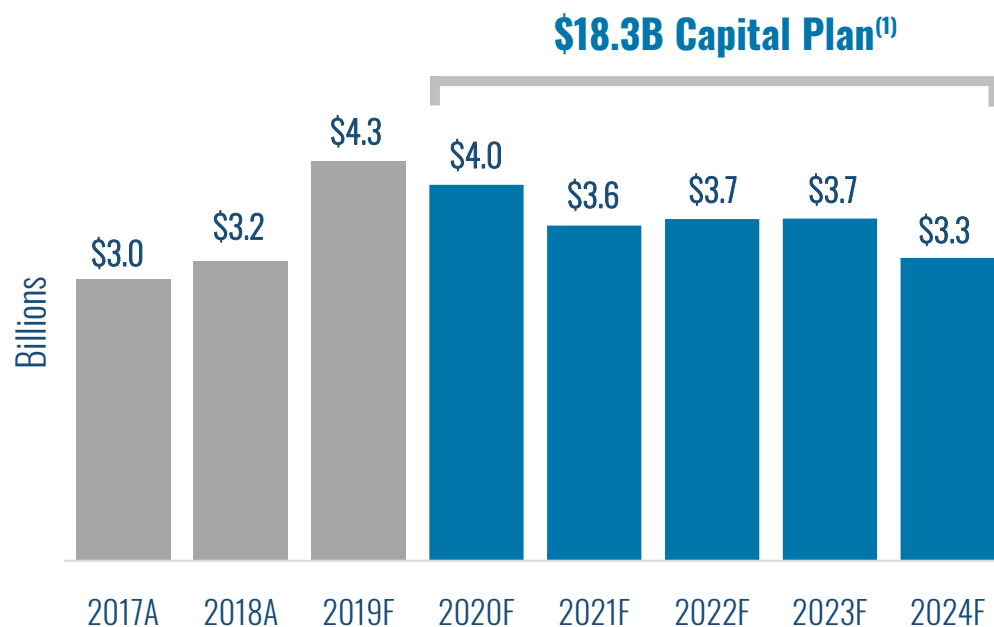


~7%
**RATE BASE
GROWTH**



~6%
**DIVIDEND
GROWTH
GUIDANCE**

2020-2024 CAPITAL PLAN



(1) Capital expenditures are translated at a forecast USD/CAD foreign exchange rate of \$1.32.

(2) Includes capital expenditures associated with Eagle Mountain Woodfibre Gas Line and Tilbury 1B projects.

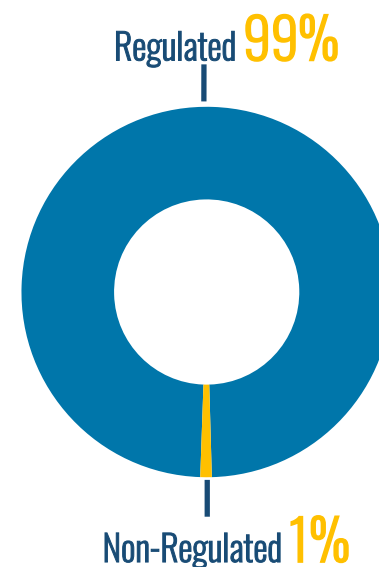
FORTIS INC. THE SHIFT TO CLEANER ENERGY DRIVING INCREMENTAL INVESTMENTS



(1) Capital expenditures for 2020-2024 are translated at a forecast USD/CAD foreign exchange rate of \$1.32 compared to \$1.28 in the 2019-2023 5-year capital plan.

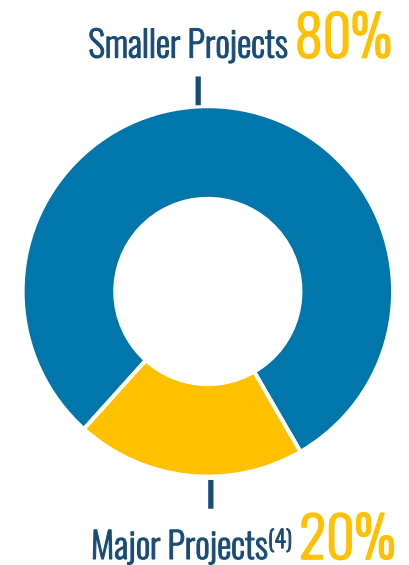
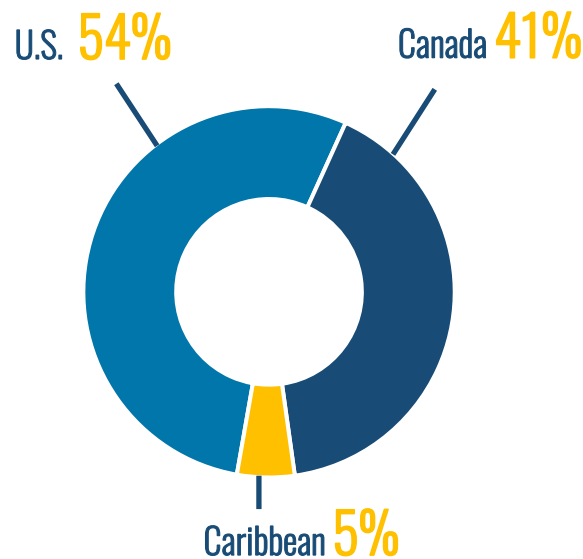
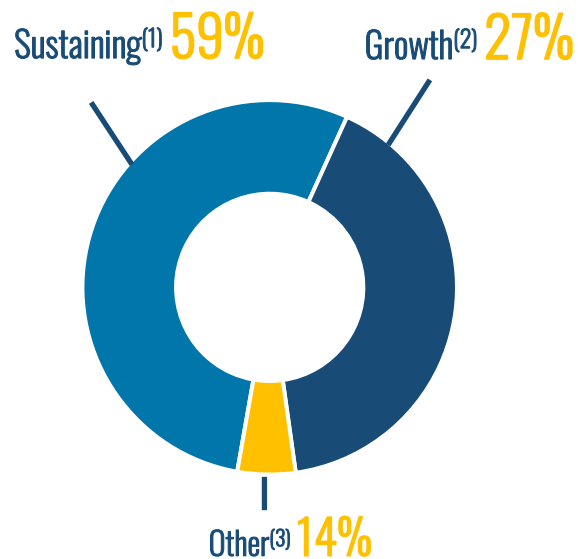
FORTIS INC. 5-YEAR CAPITAL PLAN⁽¹⁾

(billions)	
ITC	\$ 4.9
FortisBC	3.8
UNS Energy	3.4
Other Utilities	2.3
FortisAlberta	2.2
Central Hudson	1.6
Non-Regulated	0.1
Total 2020-2024 Capital Plan	\$ 18.3



(1) Capital expenditures are translated at a forecast USD/CAD foreign exchange rate of \$1.32.

LOW RISK, HIGHLY EXECUTABLE \$18.3B CAPITAL PLAN



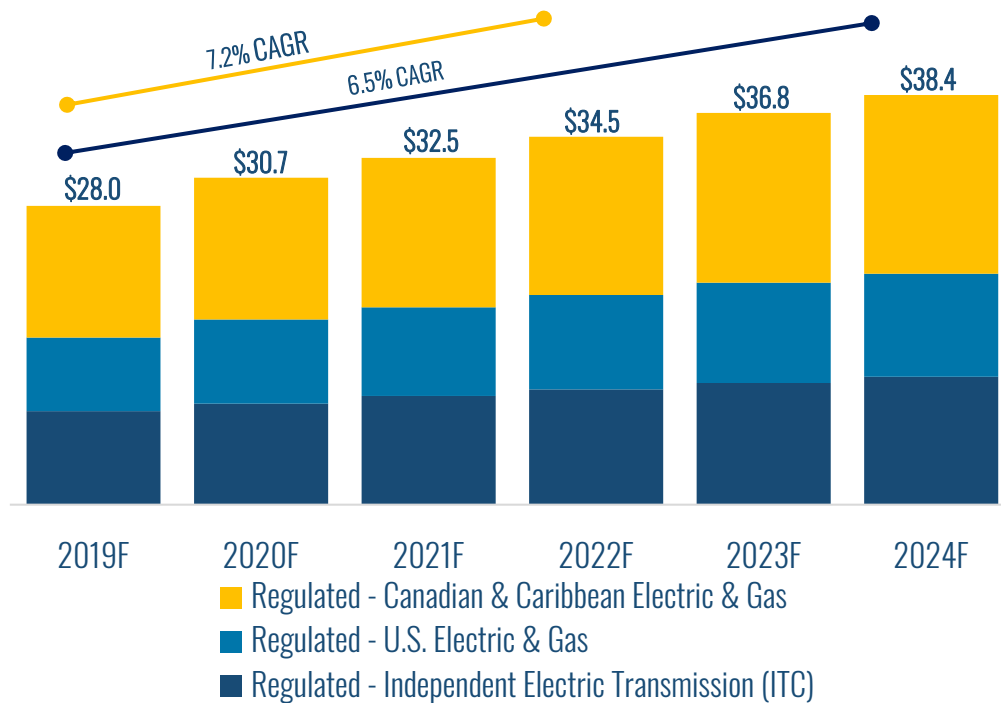
(1) Capital expenditures required to ensure continued and enhanced performance, reliability and safety.

(2) Capital expenditures required to connect new customers and infrastructure upgrades required to meet customer and associated load growth, including capital expenditures associated with AESO transmission-related investments at FortisAlberta.

(3) Related to facilities, equipment, vehicles, information technology and other assets

(4) Capital projects with a total project cost of \$200 million or greater and excludes ongoing capital maintenance projects.

FORTIS INC. 2020-2024 RATE BASE⁽¹⁾



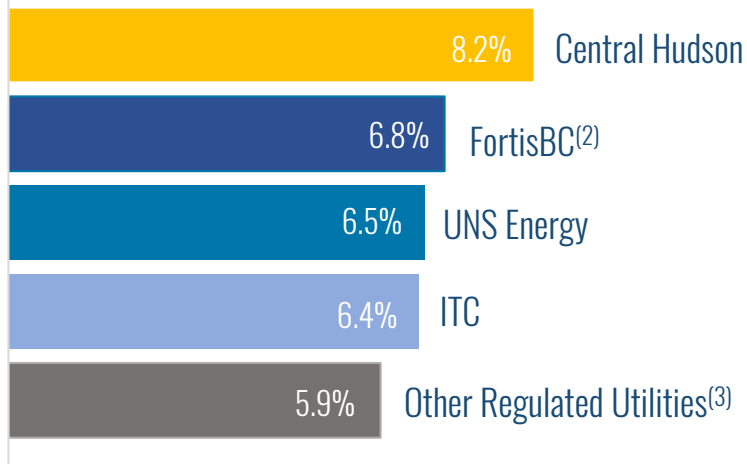
Rate base grows over
\$10B
 to **\$38.4B**
 during 5-year period

Rate base CAGR of **~7%**

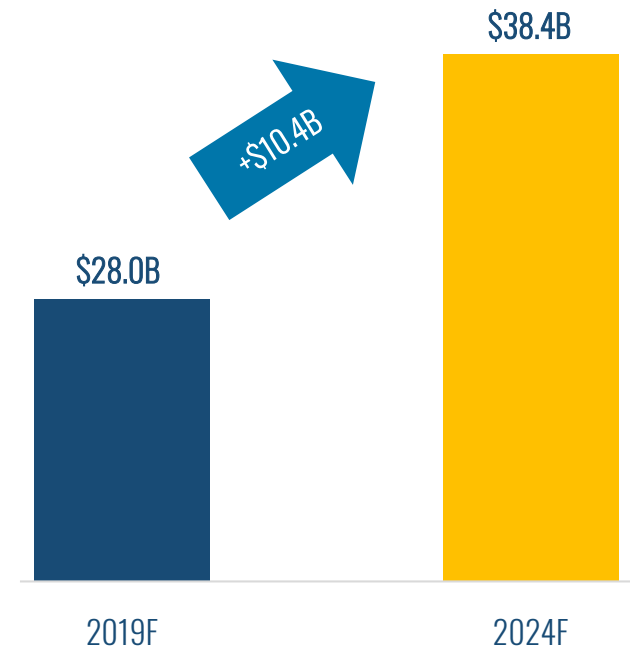
(1) Rate base is translated at a forecast USD/CAD foreign exchange rate of \$1.32.

STRONG RATE BASE GROWTH ACROSS PORTFOLIO OF UTILITIES⁽¹⁾

5-YEAR RATE BASE CAGR OF ~7%



RATE BASE



(1) Rate base is translated at a forecast USD/CAD foreign exchange rate of \$1.32.

(2) Includes energy efficiency programs that are included in rate base but are not included in capital forecast.

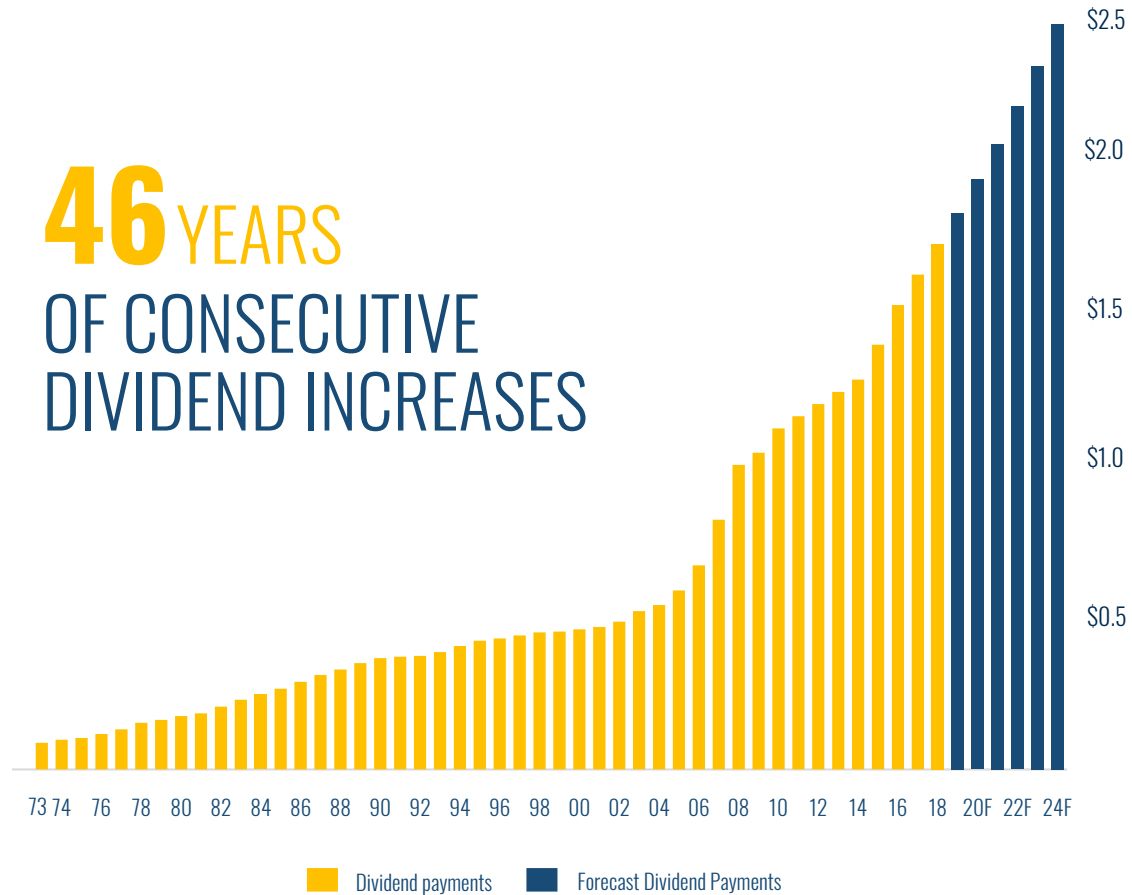
(3) Comprises FortisAlberta, Eastern Canadian and Caribbean utilities

DIVIDEND GUIDANCE SUPPORTED BY GROWTH STRATEGY

6%

AVERAGE ANNUAL
DIVIDEND
GROWTH GUIDANCE
EXTENDED TO 2024

46 YEARS
OF CONSECUTIVE
DIVIDEND INCREASES



GROWTH EXPECTED TO EXTEND BEYOND 2024



GROWTH EXPECTED BEYOND 2024: THREE LARGEST UTILITIES ACCOUNT FOR 2/3 OF CAPITAL PLAN



TODAY'S 5-YEAR CAPITAL PLAN

\$4.9B

\$3.8B

\$3.4B

FUTURE DRIVERS OF GROWTH (Not Yet Included in Plan)

- Generation shift to renewables:
 - Significant renewable capacity and battery storage in MISO and SPP queues⁽¹⁾
 - Need for additional regional projects (MISO multi-value projects at capacity upon completion)
- Resiliency:
 - Hardening of physical assets and IT/fibre networks

- Resiliency:
 - Tilbury LNG storage
 - Southern Crossing Expansion
- Renewable gas target of 15% by 2030
- Tilbury expansion to serve Asian markets

- TEP target of 30% renewables 9 years ahead of schedule
- 2020 Integrated Resource Plan (IRP) will provide visibility on investments to further the delivery of cleaner energy

(1) Additional 82GW and 91GW of additional renewable capacity in MISO and SPP queues; 3GW and 7GW of battery storage in MISO and SPP queues

FORTIS **OUTPERFORMING HISTORICAL CAPITAL PLANS**

2016 INVESTOR DAY⁽¹⁾

2017 INVESTOR DAY

2018 INVESTOR DAY



(1) Released in conjunction with Q3 2016 earnings

FORTIS INC. CURRENT REGULATORY OUTLOOK



- Final decision pending from FERC on MISO Base ROE
- Notice of Inquiries issued by FERC in 2019 on incentive policies for transmission investment and methodology for establishing base ROEs



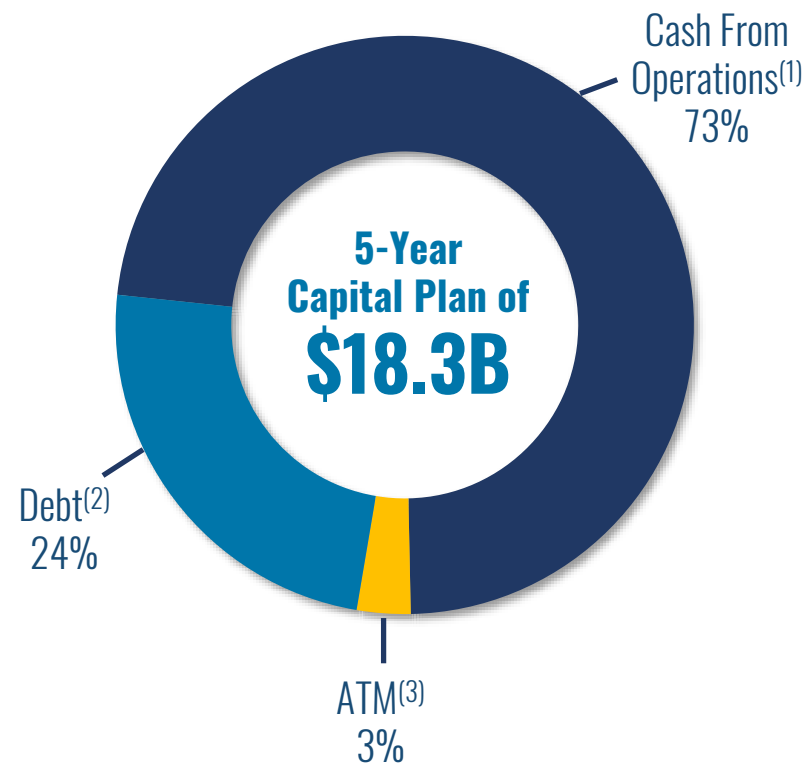
- TEP rate case filed with the ACC on April 1, 2019 using a December 31, 2018 test year



- 2020-2024 Multi-Year Rate Plan filed in March 2019

FORTIS INC. 2020-2024 FUNDING PLAN

Debt Primarily at Operating Utilities
Subsidiary Balance Sheets Reflects Approved Levels
Improved Credit Metrics
Maintaining Investment-Grade Credit Ratings
Ample Liquidity



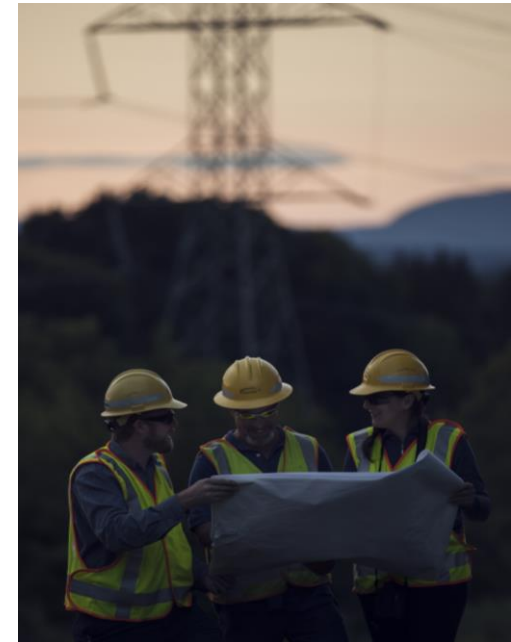
(1) Cash from operations after net dividends and customer contributions

(2) Regulated and corporate debt issuances, net of repayments

(3) Also includes shares issued under the Corporation's employee stock purchase plan and stock option plan


FORTIS™ REGULATED UTILITIES HAVE STRONG INVESTMENT-GRADE CREDIT RATINGS

Company	S&P Global	MOODY'S	DBRS
ITC Regulated Subsidiaries	A	A1	n/a
TEP	A-	A3	n/a
Central Hudson	A-	A3	n/a
FortisBC Energy	n/a	A3	A
FortisBC Electric	n/a	Baa1	A (low)
FortisAlberta	A-	Baa1	A (low)
Newfoundland Power	n/a	A2	A



STRENGTHENING CREDIT METRICS

CREDIT RATINGS

S&P Global	A- / BBB+
	BBB (high)
MOODY'S	Baa3

“Fortis has a very strong business risk profile, which is a key credit strength. More than 95% of its cash flow comes from a diverse portfolio of low risk investment grade regulated utilities... Fortis’ strong business risk profile generates predictable cash flow and debt levels leading to stable financial metrics over time, a key credit positive.”
– Moody’s Credit Opinion (May 30, 2019)

RECOVERING FROM U.S. TAX REFORM

	2018	2019F
CFO/Debt ⁽¹⁾	~10.5%	~11%
Holdco Debt/Total Debt ⁽¹⁾	~39%	~36%



2020-2024 Business Plan

Average CFO/Debt⁽¹⁾ ~12%

2024 Holdco Debt/Total Debt⁽¹⁾ ~32%

(1) Based on Moody’s methodology: (i) cash from operations (“CFO”) is before changes in working capital and is reduced by 50% of preference share dividends; and (ii) holdco debt and total debt reflect 50% of preference share balance and other adjustments, where applicable. Holdco debt reflects Fortis Inc. corporate debt and debt outside its regulated utilities.

FIVE-YEAR PLAN HIGHLIGHTS

5-year
capital plan of
\$18.3B
up \$1B
from prior plan

Average annual
capital expenditure
of **\$3.7B**, up \$0.2B
from 2019-2023 plan

5-year rate base
CAGR of
~7%

Rate base
increases
\$10.4B to
\$38.4B

Average
Annual Dividend Guidance
of **6%**
extended
to 2024

CFO/ Debt
Improves
~200
basis points⁽¹⁾

Holdco Debt/ Total Debt
Improves
~700
basis points⁽¹⁾

(1) Based on Moody's methodology and as compared to 2018 actual results.

FORTIS INC. WHY INVEST IN FORTIS?



WELL-RUN
BUSINESSES



HIGHLY
DIVERSIFIED



FOCUSED ON
ENERGY
DELIVERY



INNOVATIVE



STRONG
GROWTH
PROFILE



VIRTUALLY
ALL
REGULATED



ESG
LEADER



6%
DIVIDEND
GUIDANCE



FORTIS_{INC.}
APPENDIX

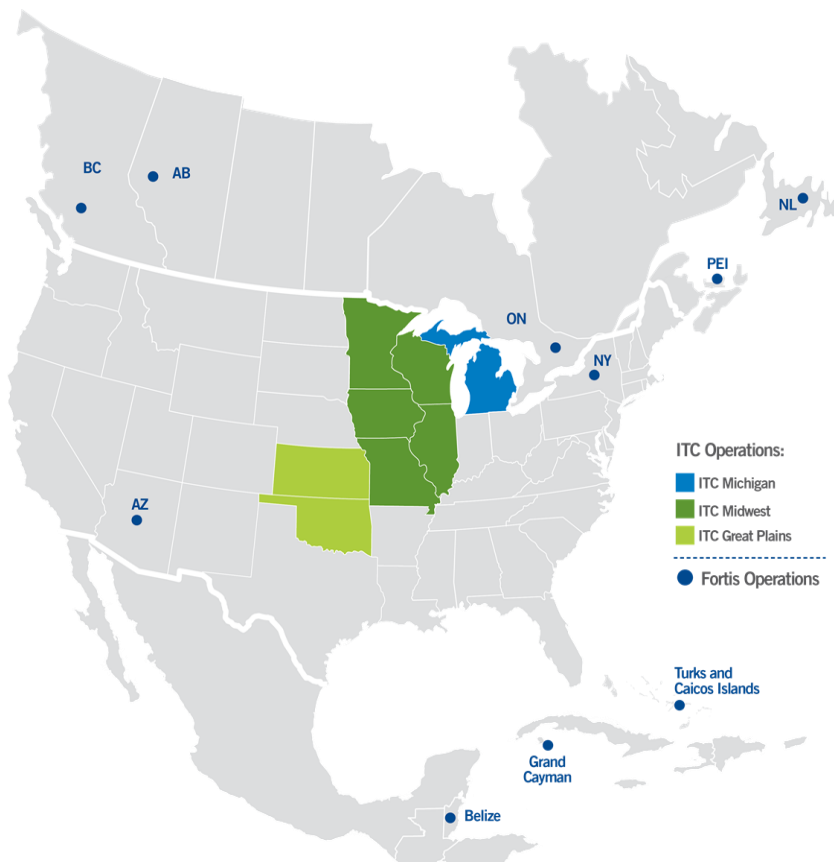
TABLE OF CONTENTS

UTILITY OVERVIEW

ITC Holdings Corp.	34 – 36
UNS Energy	37 – 38
Central Hudson	39 – 40
FortisBC	41 – 43
FortisAlberta	44 – 45
Other Electric Utilities	46 – 49

OTHER

2019-2024 Rate Base by Segment	50
2020-2024 Capital Plan by Segment	51
Major Capital Projects	52
Manageable Debt Maturities and Ample Liquidity	53
Sensitivity Exposure	54
Executive Team	55



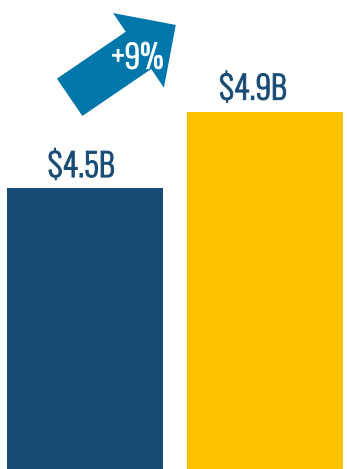
Type of Utility	Transmission
Regulator	FERC
Regulatory Model	Independent Transmission Company
2019 Regulatory Compact	11.07-12.16% ROE on 60% equity
2019F Rate Base ⁽¹⁾	\$8.8B
5-Year Rate Base CAGR ⁽¹⁾	6.4%
2018 Assets % of Total Consolidated Regulated Assets ⁽²⁾	38%
Major Capital Projects	Multi-Value Regional Transmission Projects & 34.5kV to 69kV Transmission Conversion Project
Development Opportunities ⁽³⁾	Lake Erie Connector, Connecting Renewables & Grid Modernization
Upcoming Regulatory Decisions	MISO Base ROE Complaints & Notice of Inquiries for Incentive Policies and Base ROE Methodology

(1) Rate base is translated at a USD/CAD foreign exchange rate of \$1.32.

(2) Includes goodwill

(3) Development opportunities are not included in the base capital forecast and represent incremental capital spending.

WIND INTERCONNECTIONS DRIVING GROWTH AT ITC



Incremental growth driven by :

- +\$200M to interconnect customers and cleaner energy resources to the grid. Five-year plan includes:



Wind Interconnections

- ITC Michigan: 1,500MW
- ITC Midwest: 400MW



Solar Interconnections

- ITC Michigan: 500MW
- ITC Midwest: 100MW

2019-2023
Capital Plan⁽¹⁾

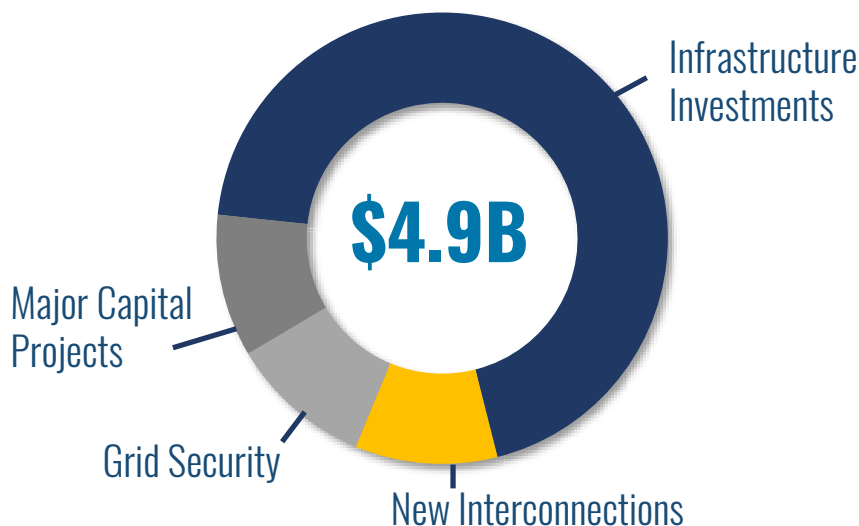
2020-2024
Capital Plan⁽¹⁾

- +\$100M for infrastructure investments to support reliability improvements
- +\$100M for change in foreign exchange⁽¹⁾

(1) Capital expenditures for 2020-2024 are translated at a forecast USD/CAD foreign exchange rate of \$1.32 compared to \$1.28 in the 2019-2023 5-year capital plan.

ITC's 5-YEAR CAPITAL PLAN

2020-2024 CAPITAL⁽¹⁾



\$3.3B Infrastructure Investments

Rebuild, reliability, resiliency, system efficiencies, increased capacity, circuit overloads, pocket load growth



\$600M Major Capital Projects

Multi-Value Regional Transmission Projects & 34.5kV to 69kV Transmission Conversion Project



\$500M Grid Security

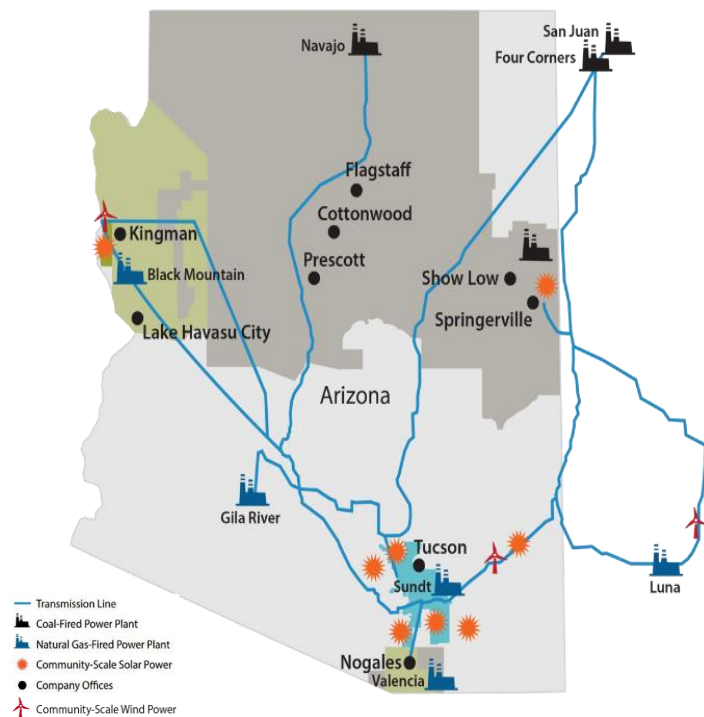
Physical and technological hardening along with technology upgrades



\$500M New Interconnections

Supports economic development and changes in generation sources

(1) Capital expenditures are translated at a forecast USD/CAD foreign exchange rate of \$1.32.



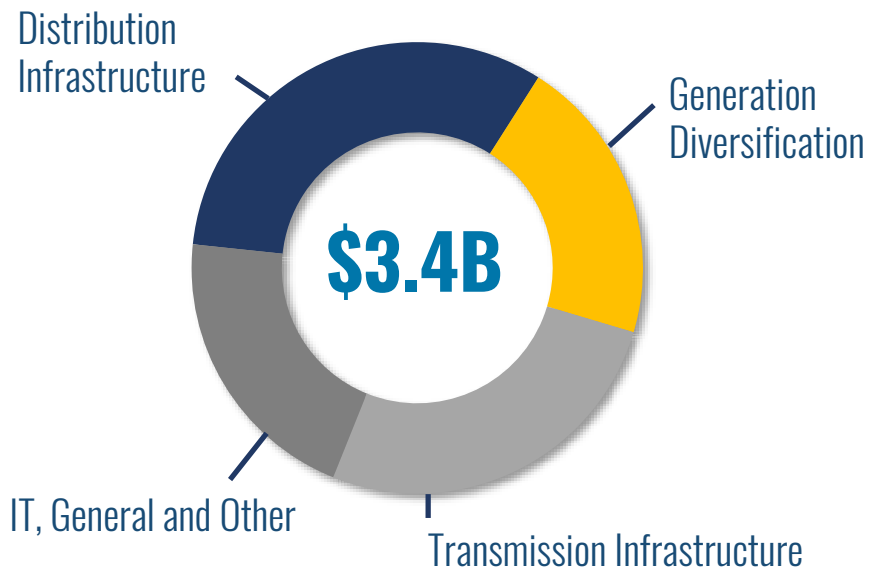
UNS Energy Corporation
A Fortis Company

	Tucson Electric	UNS Electric	UNS Gas
Type of Utility	Electricity		Gas distribution
Regulator	Arizona Corporation Commission		
Regulatory Model	Cost of service/historical test year		
2019 Regulatory Compact	9.75% ROE on 50% equity	9.5% ROE on 52.8% equity	9.75% ROE on 50.8% equity
2019F Rate Base ⁽¹⁾	\$5.0B		
5-Year Rate Base CAGR ⁽¹⁾	6.5%		
2018 Assets % of Total Consolidated Regulated Assets ⁽²⁾	20%		
Major Capital Projects	Southline Transmission Project & Oso Grande Wind Project		
Development Opportunities ⁽³⁾	Renewables, Storage & Electric Transmission		
Upcoming Regulatory Proceeding	TEP rate case filed on April 1 st using a 2018 test year & hearing and settlement procedures for FERC transmission tariff application		

(1) Rate base is translated at a USD/CAD foreign exchange rate of \$1.32.

(2) Includes goodwill

(3) Development opportunities are not included in the base capital forecast and represent incremental capital spending.

2020-2024 CAPITAL⁽¹⁾**\$1.1B Distribution Infrastructure**

Customer meter infrastructure, grid resiliency, modernization

**\$700M Generation Diversification**

Reciprocating engines, 250MW Wind

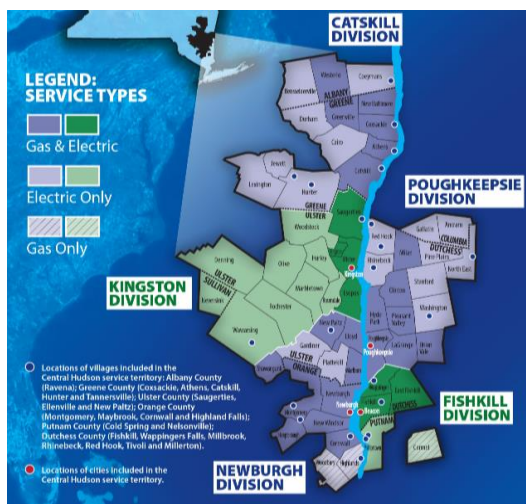
**\$900M Transmission Infrastructure**

Direct Current tie with Mexico, Southline Project

**\$700M IT, General and Other**

Supports technology, efficiency and sustainment

(1) Capital expenditures are translated at a forecast USD/CAD foreign exchange rate of \$1.32.



Type of Utility	Gas and Electricity
Regulator	New York State Public Service Commission
Regulatory Model	Cost of service on future test year
2019 Regulatory Compact ⁽¹⁾	8.8% ROE on 49% equity ⁽¹⁾
2019F Rate Base ⁽²⁾	\$1.9B
5-Year Rate Base CAGR ⁽²⁾	8.2%
2018 Assets % of Total Consolidated Regulated Assets ⁽³⁾	7%
Development Opportunities ⁽⁴⁾	Grid Modernization

(1) Effective July 1, 2019. Effective July 1, 2020, equity thickness will increase to 50%.

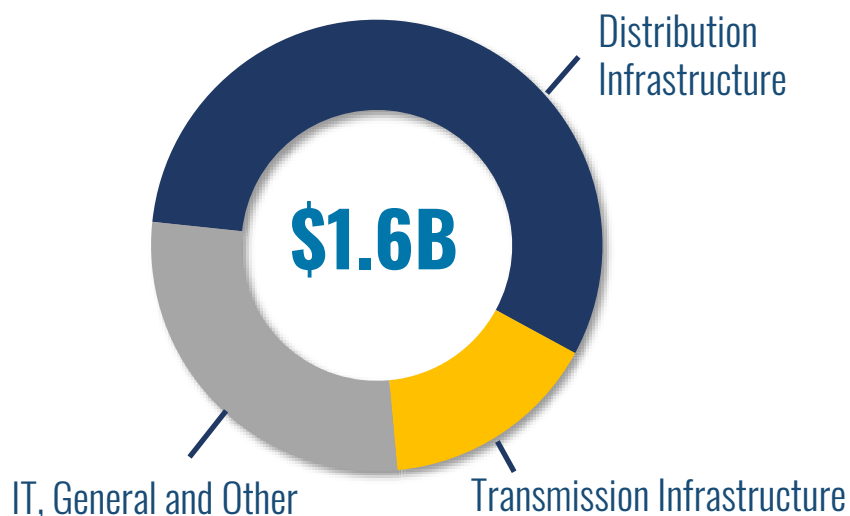
(2) Rate base is translated at a USD/CAD foreign exchange rate of \$1.32.

(3) Includes goodwill

(4) Development opportunities are not included in the base capital forecast and represent incremental capital spending.

CENTRAL HUDSON CAPITAL PLAN

2020-2024 CAPITAL⁽¹⁾



\$900M Distribution Infrastructure

Distribution Automation and Modernization



\$250M Transmission Infrastructure

Replacement of Aging Infrastructure



\$450M IT, General and Other

(1) Capital expenditures are translated at a forecast USD/CAD foreign exchange rate of \$1.32.

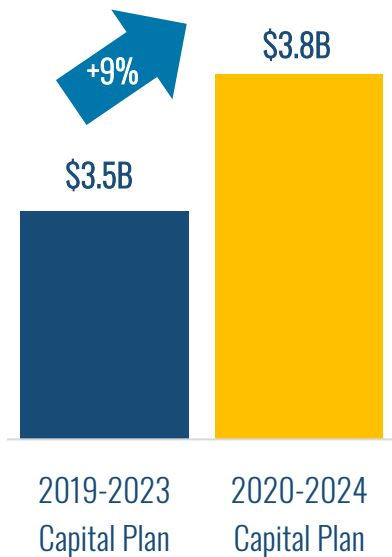


	FortisBC Gas	FortisBC Electric
Type of Utility	Gas distribution	Electricity
Regulator	British Columbia Utilities Commission	
Regulatory Model	Cost of service + PBR	
2019 Regulatory Compact	8.75% ROE on 38.5% equity	9.15% ROE on 40.0% equity
2019F Rate Base	\$4.5B	\$1.3B
5-Year Rate Base CAGR	7.8%	3.0%
2018 Assets % of Total Consolidated Regulated Assets ⁽¹⁾	13%	4%
Major Capital Projects	Lower Mainland Intermediate Pressure System Upgrade, Inland Gas Upgrades, Eagle Mountain Woodfibre Gas Line Project, Transmission Integrity Management Capabilities Project & Tilbury 1B	N/A
Development Opportunities ⁽²⁾	Renewable Gas, Tilbury LNG & Gas Infrastructure	N/A
Upcoming Regulatory Proceeding	2020-2024 Multi-Year Rate Plan Filed in March 2019	

(1) Includes goodwill

(2) Development opportunities are not included in the base capital forecast and represent incremental capital spending.

FORTIS INC. LNG DRIVING GROWTH AT FORTISBC

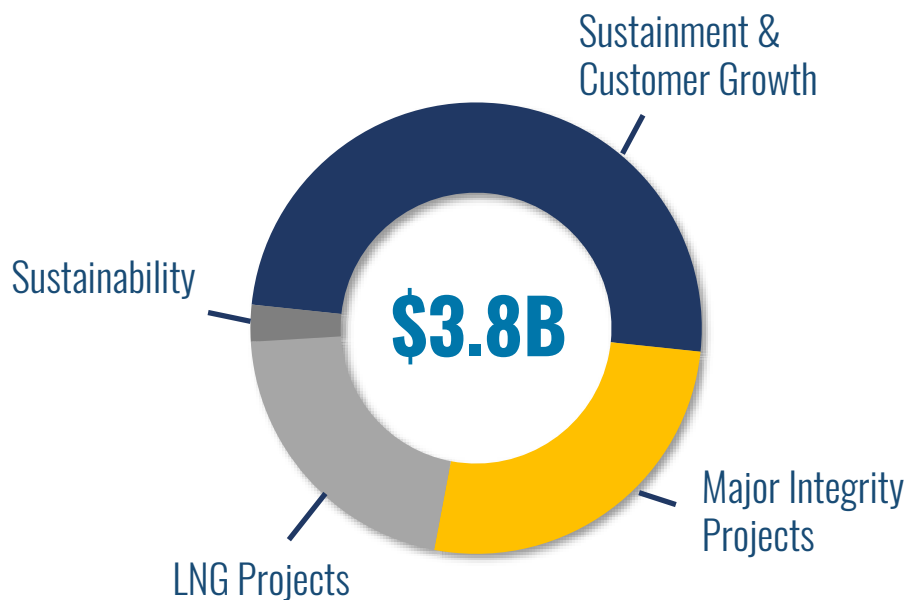


Incremental capital driven by addition of regulated Tilbury 1B

- Further expansion driven by developing marine bunkering market
- Order-in-Council received from the BC Government
- Project includes additional liquefaction and piping to a marine jetty
- Environmental assessment for the marine jetty in progress



2020-2024 CAPITAL



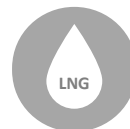
\$1.9B Sustainment & Customer Growth

Ongoing maintenance requires significant capital investment
Includes customer growth and general plant investment



\$1.1B Major Integrity Projects

Inland Gas Upgrades Project
Transmission Integrity Management Capabilities Project
Lower Mainland Intermediate Pressure System Upgrade



\$700M LNG Projects

Eagle Mountain Woodfibre Gas Line Project
Tilbury 1B Expansion Project



\$100M Sustainability

Renewable Gas Projects
Natural gas for transportation



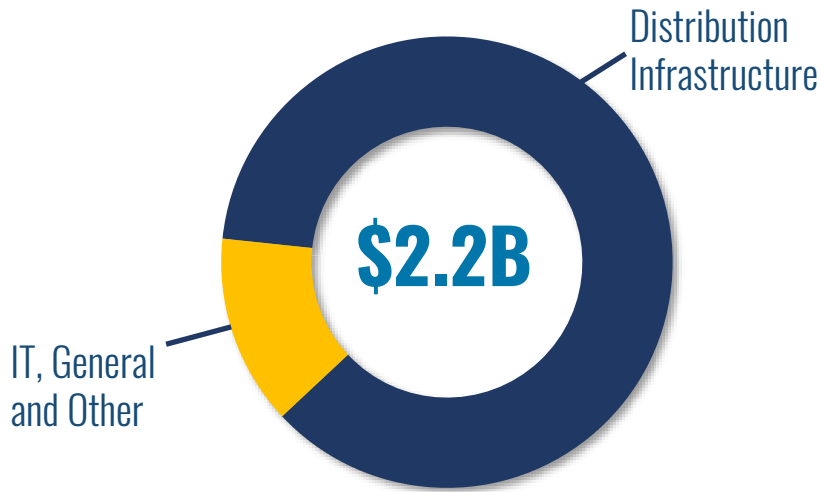
FORTIS
ALBERTA

Type of Utility	Electricity distribution
Regulator	Alberta Utilities Commission
Regulatory Model	PBR
2019 Regulatory Compact	8.5% ROE on 37% equity
2019F Rate Base	\$3.5B
5-Year Rate Base CAGR	4.1%
2018 Assets % of Total Consolidated Regulated Assets ⁽¹⁾	9%

(1) Includes goodwill

FORTISALBERTA CAPITAL PLAN

2020-2024 CAPITAL






\$1.9B Distribution Infrastructure

Safety & Reliability of Distribution Assets, Meter Upgrades, Pole Management Program, Modernization



\$300M IT, General and Other

FORTIS^{INC.} OTHER ELECTRIC UTILITIES

	 FORTIS ^{ONTARIO} ⁽¹⁾	 MARITIME ELECTRIC A FORTIS COMPANY	 NEWFOUNDLAND POWER A FORTIS COMPANY
Type of Utility	Electricity		
Regulator	Ontario Energy Board	Island Regulatory and Appeals Commission	Newfoundland and Labrador Board of Commissioners of Public Utilities
Regulatory Model	Cost of service with incentives	Cost of service on future test year	Cost of service on future test year
2019 Regulatory Compact	8.78% - 9.30% ROE on 40% equity ⁽²⁾	9.35% ROE on 40% equity	8.50% ROE +/- 40 bps on 45% equity
2019F Rate Base	\$0.3B	\$0.4B	\$1.2B
5-Year Rate Base CAGR	27.2% ⁽³⁾	3.9%	3.3%
2018 Assets % of Total Consolidated Regulated Assets ⁽⁴⁾	1%	1%	3%
Major Capital Projects	Wataynikaneyap Transmission Power Project	N/A	N/A
Development Opportunities ⁽⁵⁾	Municipal Utility Consolidation	Grid Modernization	Grid Modernization

(1) Includes Canadian Niagara Power, Cornwall Electric, Algoma Power and Fortis' 39% ownership of the Wataynikaneyap Transmission Power Project.



(2) Allowed ROE is 9.3% for Algoma Power, 8.78% for Canadian Niagara Power distribution and 9.3% for Canadian Niagara Power transmission. Cornwall Electric operates under a franchise agreement with a price-cap and commodity cost flow through and, therefore, is not regulated with reference to an allowed ROE.

(3) Reflects Fortis' 39% ownership of the Wataynikaneyap Transmission Power Project

(4) Includes goodwill

(5) Development opportunities are not included in the base capital forecast and represent incremental capital spending.

OTHER ELECTRIC UTILITIES (CONTINUED)

		
Type of Utility	Electricity	
Regulator	Utility Regulation and Competition Office	Government of the Turks and Caicos Islands
Regulatory Model	Cost of service	Cost of service
2018 Achieved ROE	11.62%	8.95%
2019F Rate Base ⁽²⁾	\$0.7B	\$0.4B
5-Year Rate Base CAGR ⁽²⁾	8.2%	3.2%
2018 Assets % of Total Consolidated Regulated Assets ⁽³⁾	2%	1%
Development Opportunities ⁽⁴⁾	Grid Modernization, Battery Storage & Renewables	Grid Modernization, Battery Storage & Renewables

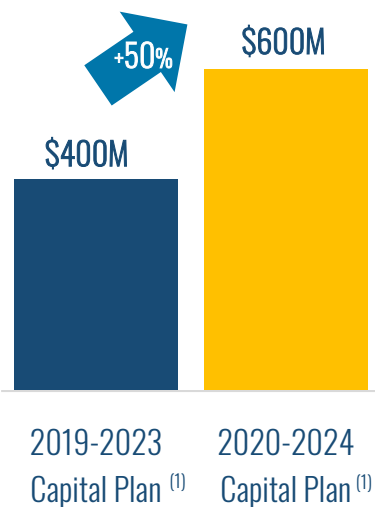
(1) Fortis has an approximate 60% controlling interest in Caribbean Utilities Company, Ltd.

(2) Rate base is translated at a USD/CAD foreign exchange rate of \$1.32

(3) Includes goodwill

(4) Development opportunities are not included in the base capital forecast and represent incremental capital spending.

SHIFT TO CLEANER ENERGY DRIVING GROWTH AT CUC



Incremental capital of \$200M driven by grid enhancements, alternative energy projects and utility scale solar projects outlined in Integrated Resource Plan (IRP)

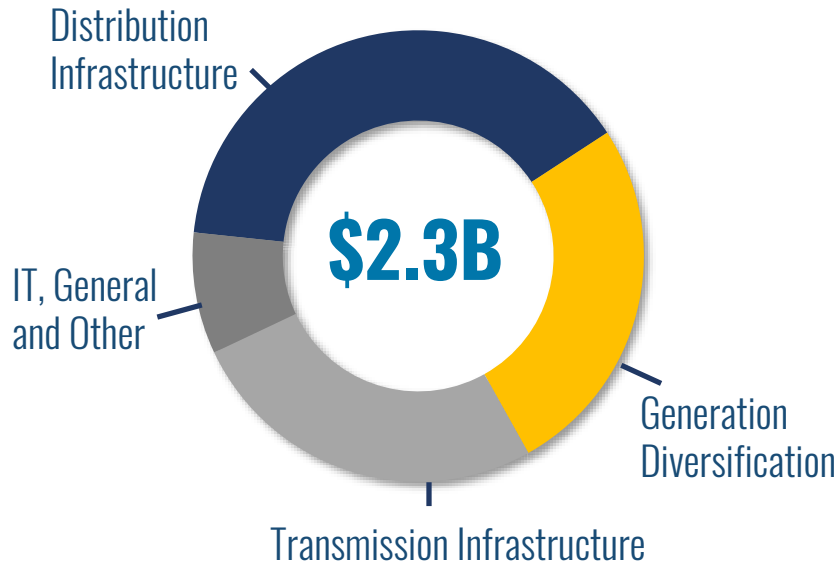
- IRP accepted by regulator in early 2019
- Calls for 100MW of renewable energy by 2025 to replace diesel generation on Grand Cayman
- CUC pursuing additional renewable opportunities



(1) Capital expenditures for 2020-2024 are translated at a forecast USD/CAD foreign exchange rate of \$1.32 compared to \$1.28 in the 2019-2023 5-year capital plan.

OTHER ELECTRIC CAPITAL PLAN

2020-2024 CAPITAL



\$900M Distribution Infrastructure

Newfoundland Power and Caribbean Utilities



\$600M Generation Diversification

Caribbean Utilities Shift to Cleaner Energy



\$600M Transmission Infrastructure

Wataynikaneyap Transmission Power Project



\$200M IT, General and Other

FORTIS INC. 2019-2024 RATE BASE BY SEGMENT

	Rate Base ⁽¹⁾								
(\$billions)	2019F	2020F	2021F	2022F	2023F	2024F	3-Year CAGR to 2022	5-Year CAGR to 2024	
Regulated - Independent Electric Transmission									
ITC ⁽²⁾	8.8	9.5	10.2	10.8	11.4	12.0	7.2%	6.4%	
Regulated - US Electric & Gas									
UNS Energy	5.0	5.8	6.1	6.4	6.8	6.9	8.6%	6.5%	
Central Hudson	1.9	2.1	2.2	2.4	2.6	2.8	9.0%	8.2%	
Total Regulated - US Electric & Gas	6.9	7.9	8.3	8.8	9.4	9.7	8.7%	7.0%	
Regulated - Canadian & Caribbean Electric & Gas									
FortisBC Energy	4.5	5.0	5.1	5.4	6.1	6.6	6.4%	7.8%	
FortisAlberta	3.5	3.7	3.9	4.1	4.2	4.3	4.8%	4.1%	
FortisBC Electric	1.3	1.4	1.5	1.5	1.5	1.5	3.6%	3.0%	
Other Electric ⁽³⁾	3.0	3.2	3.5	3.9	4.2	4.3	9.2%	7.9%	
Total Regulated - Canadian & Caribbean Electric & Gas	12.3	13.3	14.0	14.9	16.0	16.7	6.3%	6.3%	
Total Rate Base Forecast	28.0	30.7	32.5	34.5	36.8	38.4	7.2%	6.5%	

(1) Rate base is translated at a USD/CAD foreign exchange rate of \$1.32.
 (2) Fortis has an 80.1% controlling ownership interest in ITC, rate base represents 100% ownership.
 (3) Comprises Eastern Canadian and Caribbean electric utilities.


FORTIS INC. 2020-2024 CAPITAL PLAN BY SEGMENT

Capital Forecast ⁽¹⁾						
<i>(\$millions)</i>	2020F	2021F	2022F	2023F	2024F	2020-2024 TOTAL
Regulated - Independent Electric Transmission						
ITC	976	987	1,043	1,018	922	4,946
Regulated - US Electric & Gas						
UNS Energy	1,160	677	575	526	441	3,379
Central Hudson	292	309	359	306	292	1,558
Total Regulated - US Electric & Gas	1,452	986	934	832	733	4,937
Regulated - Canadian & Caribbean Electric & Gas						
FortisBC Energy	507	546	648	850	688	3,239
FortisAlberta	436	460	421	420	417	2,154
FortisBC Electric	141	139	110	109	108	607
Other Electric ⁽²⁾	502	473	485	442	352	2,254
Total Regulated - Canadian & Caribbean Electric & Gas	1,586	1,618	1,664	1,821	1,565	8,254
Non-Regulated	32	13	35	10	36	126
Total Capital Forecast	4,046	3,604	3,676	3,681	3,256	18,263

(1) Capital expenditures are translated at a USD/CAD foreign exchange rate of \$1.32.

(2) Comprises Eastern Canadian and Caribbean electric utilities.

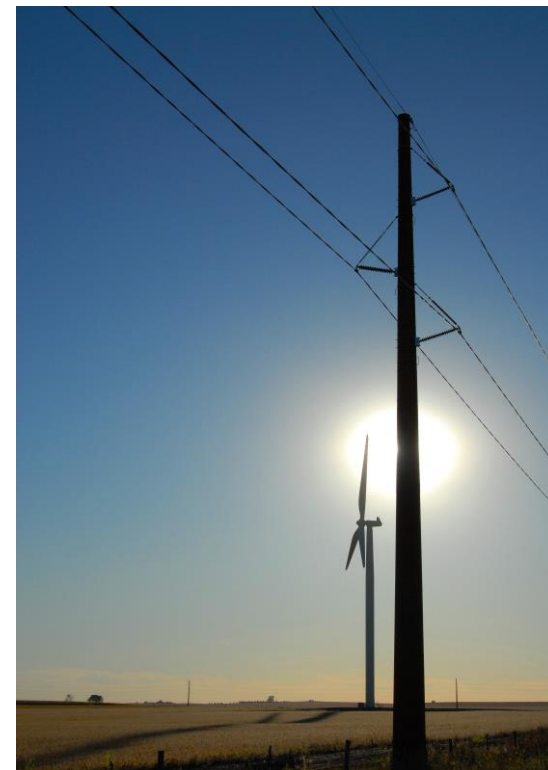
FORTIS **MAJOR CAPITAL PROJECTS⁽¹⁾**

(\$Millions)	Expected to be Incurred to the End of 2019	Total 2020-2024 Plan	Expected Year of Completion
ITC Multi-Value Regional Transmission Projects	646 ⁽²⁾	276	2023
ITC 34.5 kV to 69 kV Transmission Conversion Project	345 ⁽²⁾	268	Post-2024
UNS Southline Transmission Project	102	441	2022
UNS Oso Grande Wind Project	346	181	2020
FortisBC Lower Mainland Intermediate Pressure System Upgrade	397	72	2020
FortisBC Eagle Mountain Woodfibre Gas Line Project	-	350	2023
FortisBC Transmission Integrity Management Capabilities Project	14	517	Post-2024
FortisBC Inland Gas Upgrades Project	9	319	Post-2024
FortisBC Tilbury 1B 	12	352	2024
Wataynikaneyap Transmission Power Project ⁽³⁾	188	437	2023

(1) Major capital projects are identified as those with a total project cost of \$200 million or greater and exclude ongoing capital maintenance projects. Total project costs include forecasted capitalized interest and non-cash equity component of AFUDC. Capital expenditures are translated at a forecast USD/CAD foreign exchange rate of \$1.32.

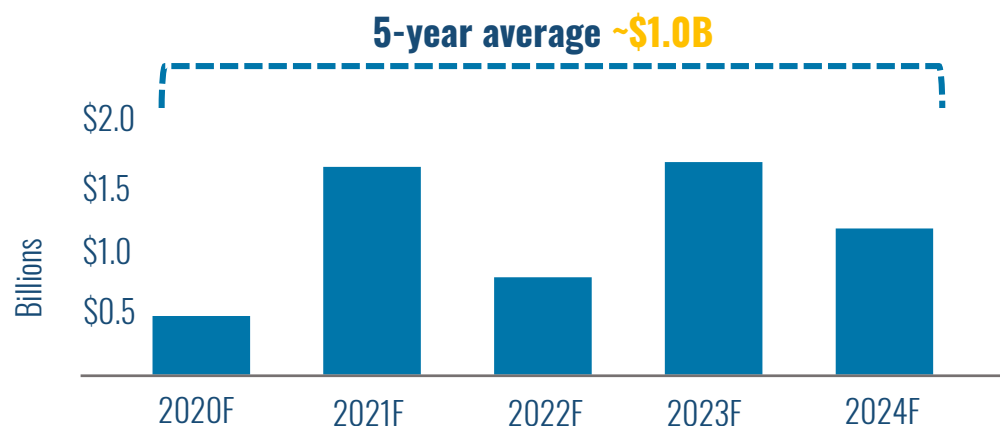
(2) Reflects capital expenditures since date of acquisition of October 14, 2016

(3) Reflects Fortis' assumed 39% share of the estimated capital spending for the project. Under the funding framework, Fortis will be funding its equity component only.



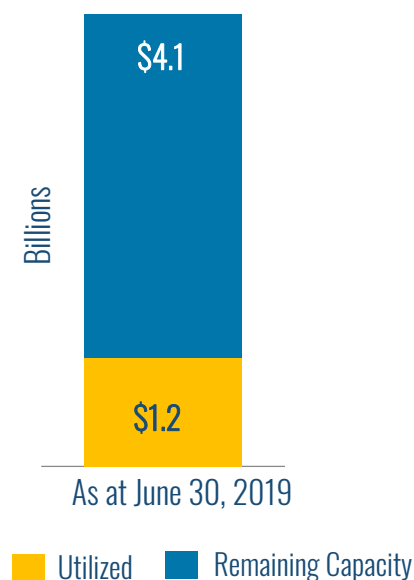
MANAGEABLE DEBT MATURITIES AND AMPLE LIQUIDITY

CONSOLIDATED FIXED-TERM DEBT MATURITIES⁽¹⁾



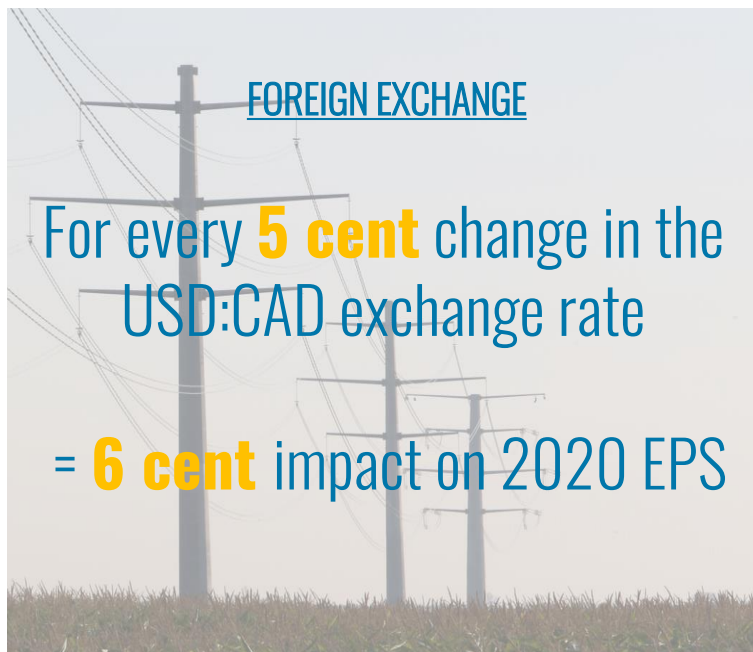
(\$millions)	2020F	2021F	2022F	2023F	2024F	Total
Canadian and Caribbean Regulated Electric	71	67	75	98	201	512
U.S. Regulated	206	418	3	304	127	1,058
ITC Holdings	-	262	655	327	524	1,768
Corporate	164	818	-	873	249	2,104
Total	441	1,565	733	1,602	1,101	5,442

CONSOLIDATED CREDIT FACILITIES



(1) Debt as at June 30, 2019 and excludes any new debt issuances during the plan period. Excludes repayments of finance leases along with the current portion of credit facilities, which are assumed to be extended by one-year annually.

FORTISTM SENSITIVITY EXPOSURE



2020 EPS Impact

25 basis point change in ROE at ITC	~\$0.03
25 basis point change in ROE at UNS Energy	~\$0.02

5-Year Rate Base CAGR

Additional \$1B in Capital Expenditures	~30 BPS
---	---------

